

## Description

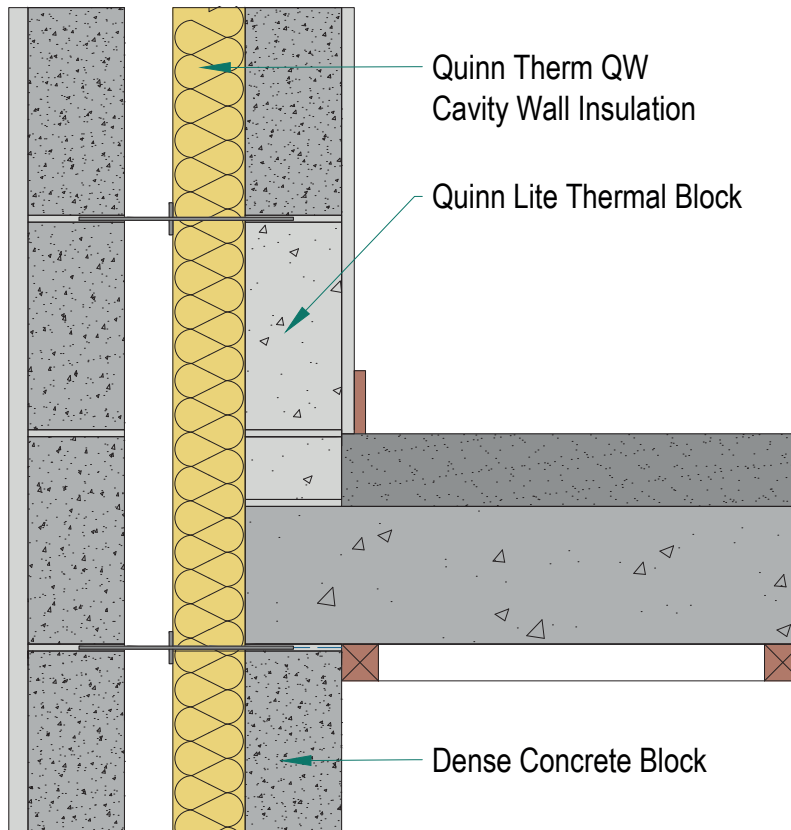
Concrete Intermediate Floor within a dwelling

### Identifier

1.04

### NSAI modeller no.


TM/02



	A		B		C		D	
	Wall U-value 0.21W/m <sup>2</sup> K (partial fill insulation only) Roof = 0.16, Floor = 0.21		Wall U-value 0.15W/m <sup>2</sup> K (partial fill insulation with internal insulation) Roof = 0.14, Floor = 0.15		Wall U-value 0.15W/m <sup>2</sup> K (partial fill insulation only) Roof = 0.14, Floor = 0.15		Wall U-value 0.12W/m <sup>2</sup> K (partial fill insulation with internal insulation) Roof = 0.12, Floor = 0.12	
Inner leaf type	Ψ-value (W/mK)	Temperature factor (fRsi)	Ψ-value (W/mK)	Temperature factor (fRsi)	Ψ-value (W/mK)	Temperature factor (fRsi)	Ψ-value (W/mK)	Temperature factor (fRsi)
B3	0.050	0.94	0.073	0.93	0.037	0.96	0.095	0.92
B5	0.052	0.94	0.075	0.93	0.038	0.96	0.097	0.92
B7	0.052	0.94	0.075	0.93	0.038	0.96	0.098	0.92

## Notes

Diagram is illustrative only. Where the floor separates two dwellings, attention should be paid to other aspects of building regulations outside of part L, in particular parts B (Fire) and E (sound). The psi values in the table above are for the whole junction. Only half of these values should be assigned to each dwelling.



**NSAI**  
Agrément

Andrew Lundberg  
Passivate

Registration Number IAB/TM/02  
NSAI Approved Thermal Modeller