

QUINN LITE

Description

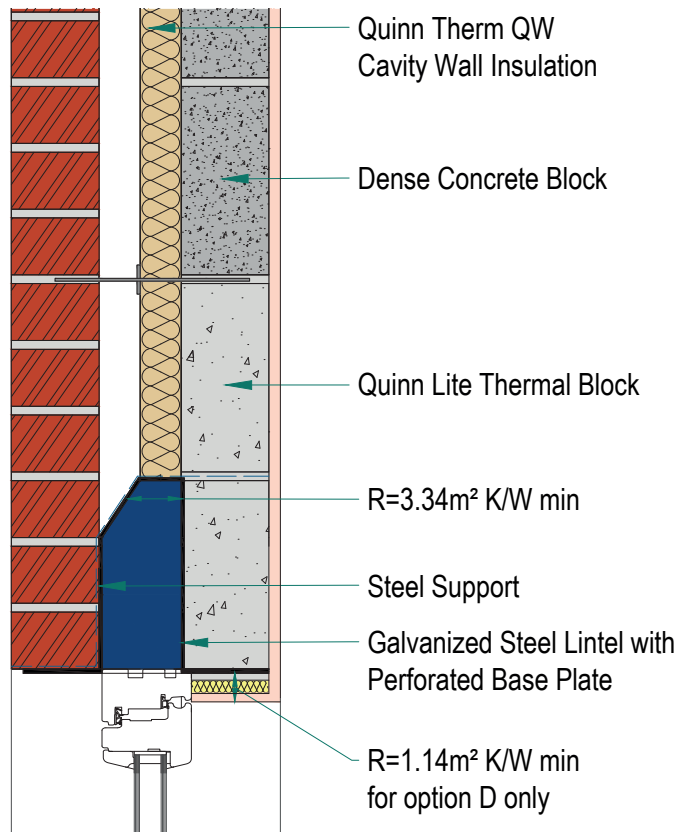
Galvanised Steel Top hat lintel detail bridging masonry cavity wall

Identifier

Diagram 1

NSAI modeller no.


TM/02



	A		B		C		D	
	Wall U-value 0.21W/m ² K (partial fill insulation only) Roof = 0.16, Floor = 0.21		Wall U-value 0.15W/m ² K (partial fill insulation with internal insulation) Roof = 0.14, Floor = 0.15		Wall U-value 0.15W/m ² K (partial fill insulation only) Roof = 0.14, Floor = 0.15		Wall U-value 0.12W/m ² K (partial fill insulation with internal insulation) Roof = 0.12, Floor = 0.12	
Inner leaf type	Ψ-value (W/mK)	Temperature factor (fRsi)	Ψ-value (W/mK)	Temperature factor (fRsi)	Ψ-value (W/mK)	Temperature factor (fRsi)	Ψ-value (W/mK)	Temperature factor (fRsi)
B3		Fails	0.126	0.88		Fails	0.108	0.87
B5		Fails	0.133	0.88		Fails	0.112	0.87
B7		Fails	0.134	0.88		Fails	0.113	0.88

Notes

Notes: Thickness of lintel material not more than 3mm. No base plate. NOT RECOMMENDED WITHOUT INTERNAL INSULATION IN ADDITION TO PARTIAL FILL CAVITY INSULATION DUE TO LOW SURFACE TEMPERATURE ISSUE.



NSAI
Agrément

Andrew Lundberg
Passivate

Registration Number IAB/TM/02
NSAI Approved Thermal Modeller