

# QUINN LITE

## Description

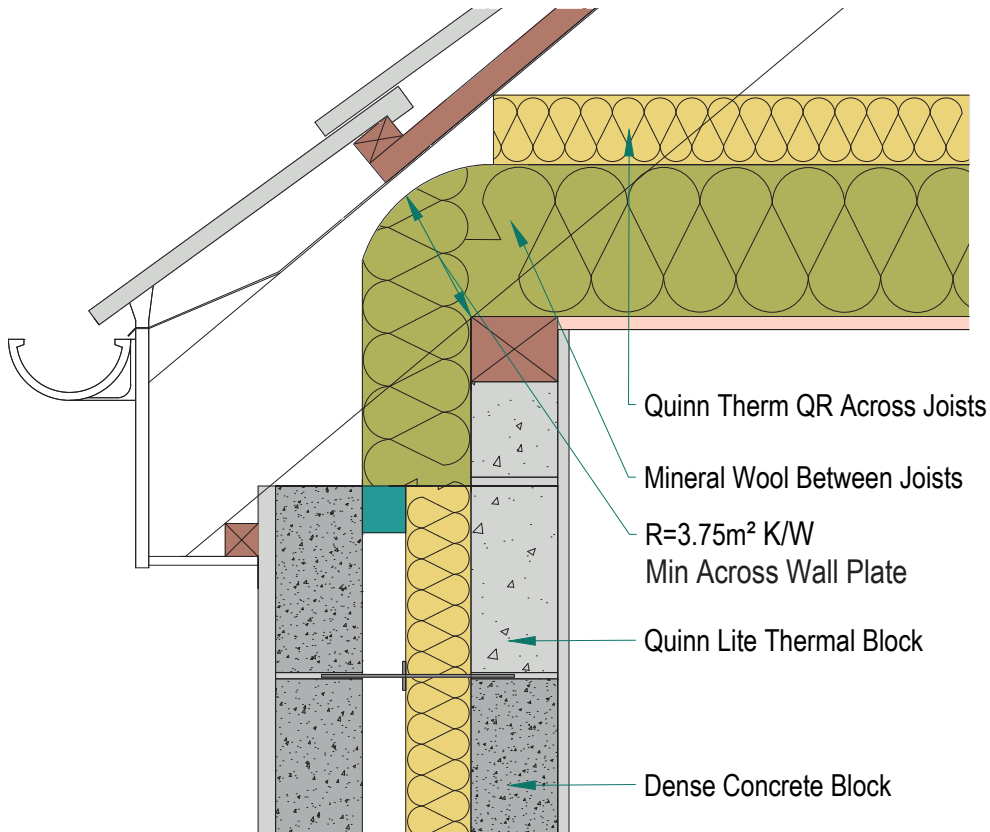
Eaves - Unventilated/Ventilated attic

### Identifier

1.09 & 1.10

### NSAI modeller no.

TM/02



	A		B		C		D	
	Wall U-value 0.21W/m <sup>2</sup> K (partial fill insulation only) Roof = 0.16, Floor = 0.21		Wall U-value 0.15W/m <sup>2</sup> K (partial fill insulation with internal insulation) Roof = 0.14, Floor = 0.15		Wall U-value 0.15W/m <sup>2</sup> K (partial fill insulation only) Roof = 0.14, Floor = 0.15		Wall U-value 0.12W/m <sup>2</sup> K (partial fill insulation with internal insulation) Roof = 0.12, Floor = 0.12	
Inner leaf type	Ψ-value (W/mK)	Temperature factor (fRsi)	Ψ-value (W/mK)	Temperature factor (fRsi)	Ψ-value (W/mK)	Temperature factor (fRsi)	Ψ-value (W/mK)	Temperature factor (fRsi)
B3	0.019	0.9	0.022	0.88	0.027	0.91	0.025	0.89
B5	0.021	0.9	0.023	0.89	0.029	0.91	0.026	0.89
B7	0.021	0.9	0.023	0.89	0.029	0.91	0.026	0.89

## Notes

Notes: Thermal resistance of insulation carried across wall plate to be min. 3.75m<sup>2</sup>K/W. Mineral wool or similar products used between joists and across wall plate to have maximum thermal conductivity of 0.04W/mK.

**NSAI**  
Agrément

Andrew Lundberg  
Passivate

Registration Number IAB/TM/02  
NSAI Approved Thermal Modeller