

QUINN LITE

Description

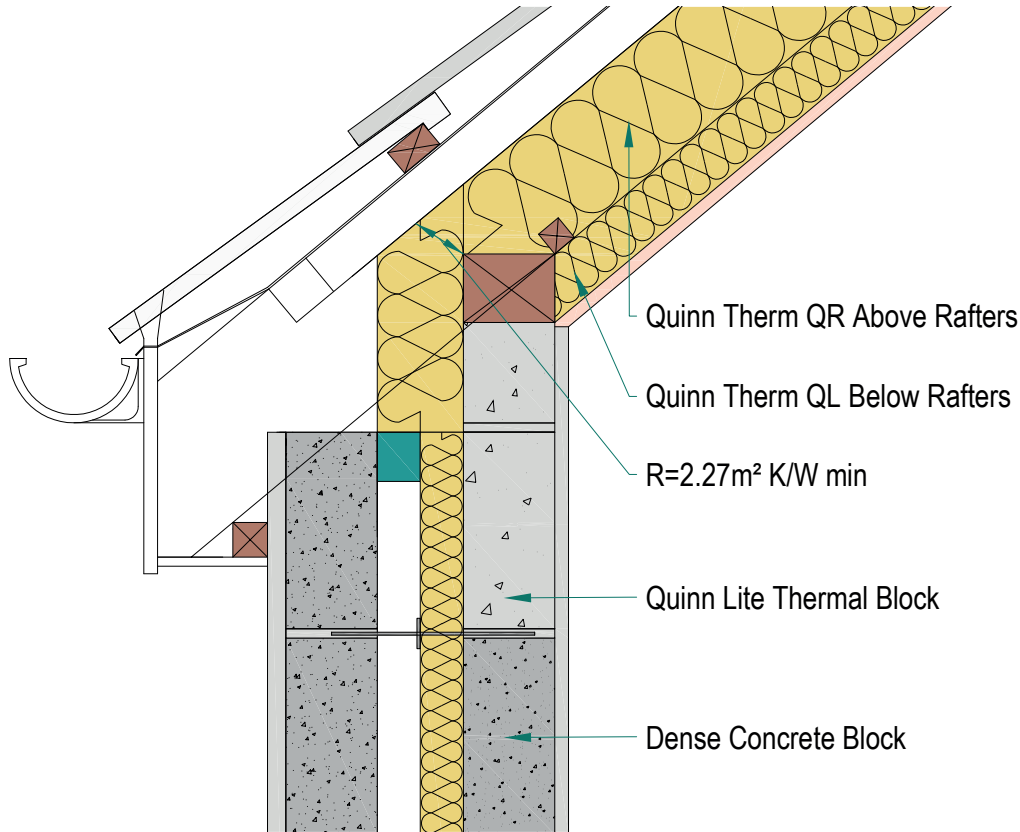
Eaves -Ventilated - Insulation between and under rafters - Pitched ceiling

Identifier

1.13.1

NSAI modeller no.

TM/02



	A		B		C		D	
	Wall U-value 0.21W/m ² K (partial fill insulation only) Roof = 0.16, Floor = 0.21		Wall U-value 0.15W/m ² K (partial fill insulation with internal insulation) Roof = 0.14, Floor = 0.15		Wall U-value 0.15W/m ² K (partial fill insulation only) Roof = 0.14, Floor = 0.15		Wall U-value 0.12W/m ² K (partial fill insulation with internal insulation) Roof = 0.12, Floor = 0.12	
Inner leaf type	Ψ-value (W/mK)	Temperature factor (fRsi)	Ψ-value (W/mK)	Temperature factor (fRsi)	Ψ-value (W/mK)	Temperature factor (fRsi)	Ψ-value (W/mK)	Temperature factor (fRsi)
B3	0.013	0.91	0.013	0.91	0.022	0.91	0.016	0.92
B5	0.016	0.91	0.015	0.91	0.025	0.91	0.017	0.92
B7	0.018	0.91	0.015	0.91	0.026	0.91	0.017	0.92

Notes

Thermal resistance of insulation across wall plate to be min. 2.27m²K/W (or 50mm Quinnterm QR). Cavity barrier represented here by 50mm mineral wool (0.04W/mK). Compliance with all other aspects of the building regulations, particularly Part B (Fire) must be considered separately.

NSAI
Agrément

Andrew Lundberg
Passivate

Registration Number IAB/TM/02
NSAI Approved Thermal Modeller