

Description

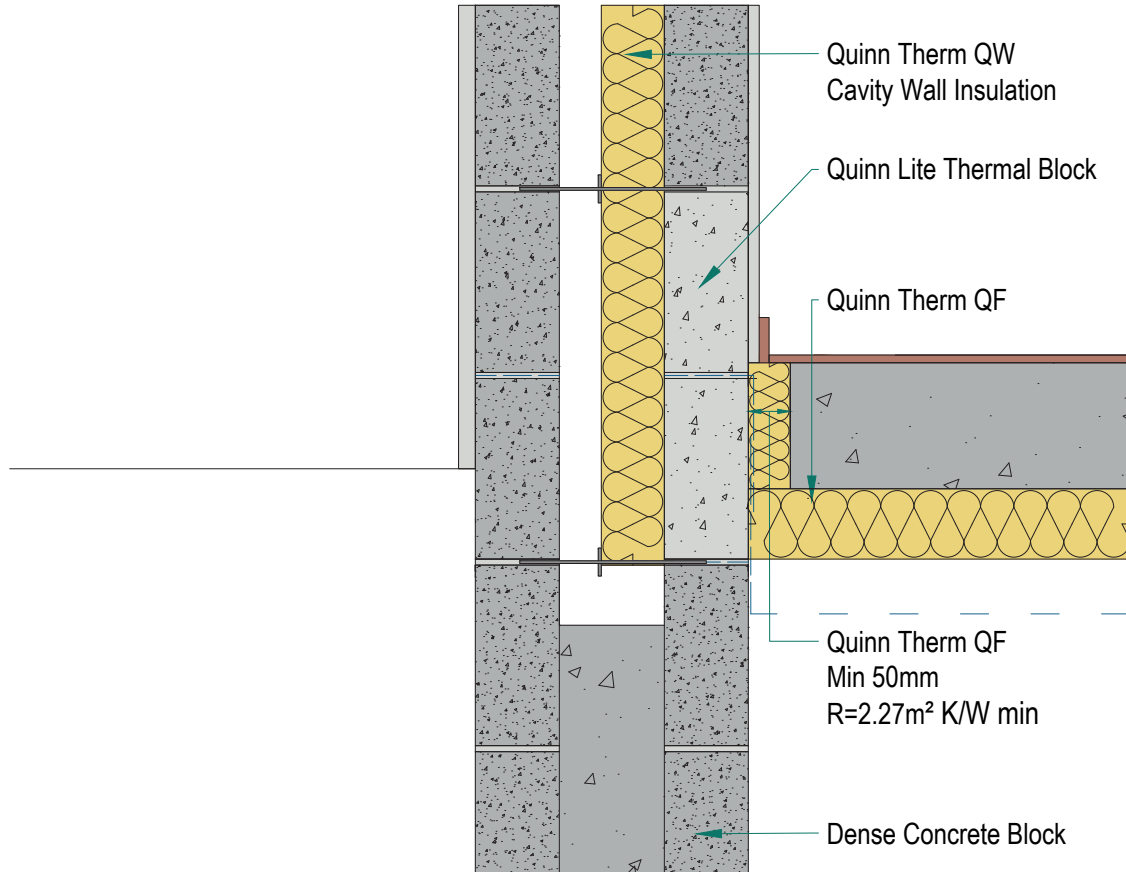
Ground Floor - Insulation below slab

Identifier

1.02

NSAI modeller no.

TM/02



	A		B		C		D	
	Wall U-value 0.21W/m ² K (partial fill insulation only) Roof = 0.16, Floor = 0.21		Wall U-value 0.15W/m ² K (partial fill insulation with internal insulation) Roof = 0.14, Floor = 0.15		Wall U-value 0.15W/m ² K (partial fill insulation only) Roof = 0.14, Floor = 0.15		Wall U-value 0.12W/m ² K (partial fill insulation with internal insulation) Roof = 0.12, Floor = 0.12	
Inner leaf type	Ψ-value (W/mK)	Temperature factor (fRsi)	Ψ-value (W/mK)	Temperature factor (fRsi)	Ψ-value (W/mK)	Temperature factor (fRsi)	Ψ-value (W/mK)	Temperature factor (fRsi)
B3	0.018	0.89	0.036	0.93	0.043	0.91	0.035	0.93
B5	0.029	0.88	0.04	0.93	0.054	0.9	0.038	0.92
B7	0.033	0.87	0.041	0.93	0.058	0.9	0.039	0.92

Notes

Perimeter insulation around screed to have thermal resistance of 2.27m²K/W or greater.

