

QUINN LITE

Description

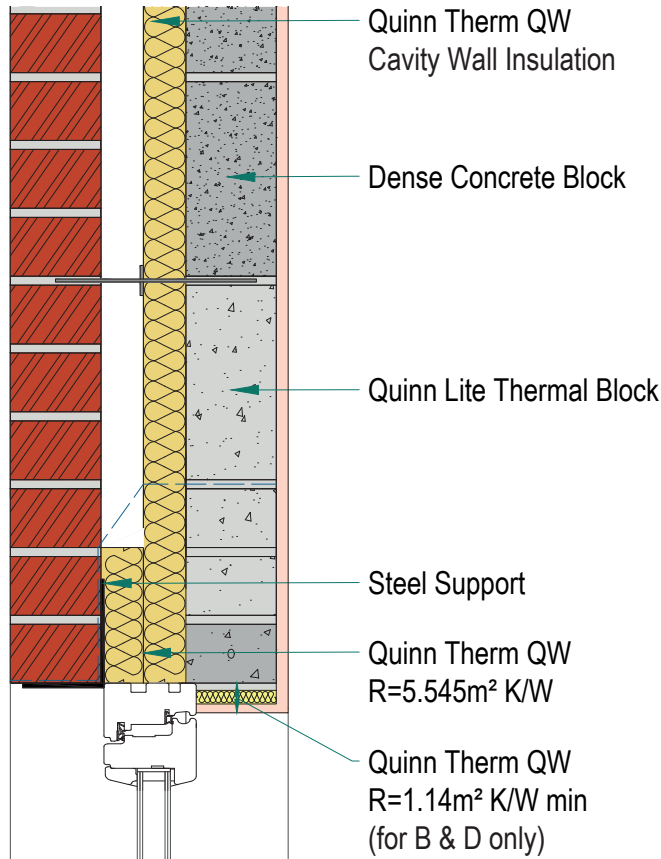
Open - Split Lintels - Steel and Concrete

Identifier

1.21

NSAI modeller no.

TM/02



	A		B		C		D	
	Wall U-value 0.21W/m ² K (partial fill insulation only) Roof = 0.16, Floor = 0.21		Wall U-value 0.15W/m ² K (partial fill insulation with internal insulation) Roof = 0.14, Floor = 0.15		Wall U-value 0.15W/m ² K (partial fill insulation only) Roof = 0.14, Floor = 0.15		Wall U-value 0.12W/m ² K (partial fill insulation with internal insulation) Roof = 0.12, Floor = 0.12	
Inner leaf type	Ψ-value (W/mK)	Temperature factor (fRsi)	Ψ-value (W/mK)	Temperature factor (fRsi)	Ψ-value (W/mK)	Temperature factor (fRsi)	Ψ-value (W/mK)	Temperature factor (fRsi)
B3	-0.010	0.95	-0.006	0.96	-0.009	0.96	0.002	0.96
B5	-0.009	0.95	-0.005	0.96	-0.008	0.96	0.003	0.95
B7	-0.008	0.95	-0.004	0.96	-0.008	0.96	0.004	0.95

Notes

Stainless Steel angle supporting outer leaf.

NSAI
Agrément

Andrew Lundberg
Passivate

Registration Number IAB/TM/02
NSAI Approved Thermal Modeller