

Description

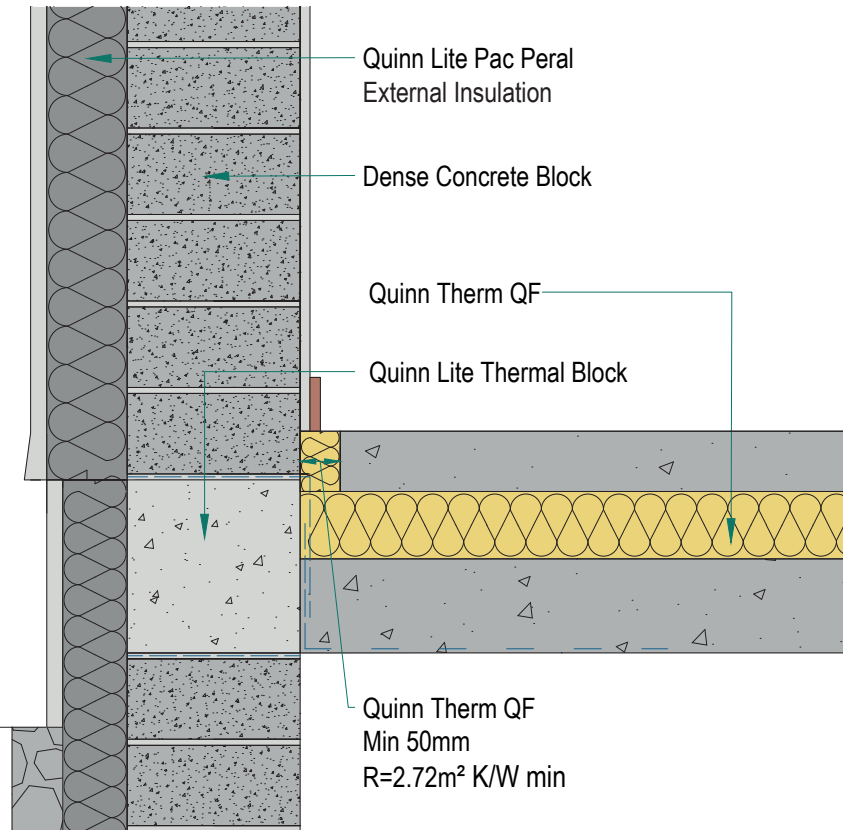
Ground Floor - Insulation below slab

Identifier

2.02

NSAI modeller no.

TM/02



	A		B		C	
	Wall U-value 0.21W/m2K Roof = 0.16, Floor = 0.21		Wall U-value 0.15W/m2K Roof = 0.14, Floor = 0.15		Wall U-value 0.12W/m2K Roof = 0.12, Floor = 0.12	
Inner leaf type	Ψ-value (W/mK)	Temperature factor (fRsi)	Ψ-value (W/mK)	Temperature factor (fRsi)	Ψ-value (W/mK)	Temperature factor (fRsi)
B3	0.061	0.880	0.085	0.89	0.089	0.910
B5	0.076	0.870	0.104	0.89	0.108	0.890
B7	0.082	0.860	0.110	0.88	0.115	0.890

Notes

Perimeter insulation to be thermal resistance of minimum 2.72m2K/W. Two courses of Quinnlite block used below DPC. External insulation to extend min. 600mm below internal finished floor level.

NSAI
Agrément

Andrew Lundberg
Passivate

Registration Number IAB/TM/02
NSAI Approved Thermal Modeller