

Description

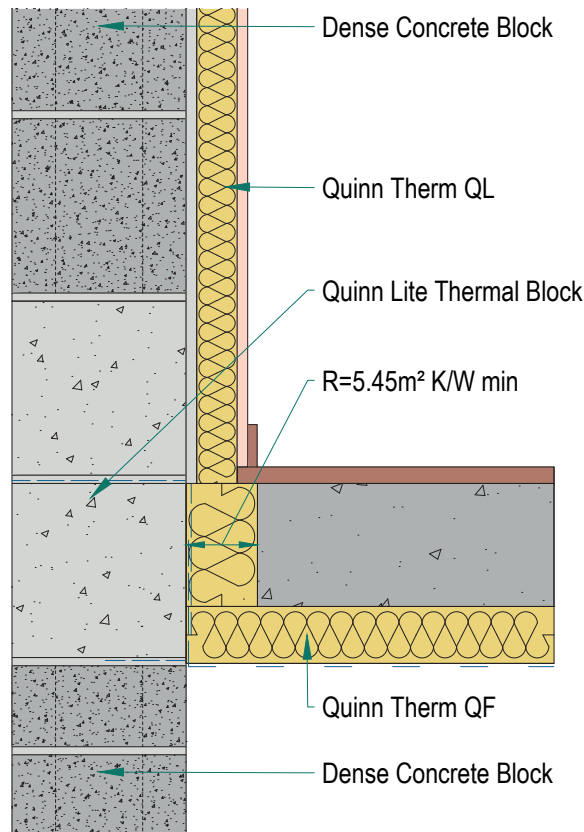
Ground Floor - Insulation below slab

Identifier

6.02

NSAI modeller no.

TM/02



	A		B		C	
	Wall U-value 0.21W/m ² K (internal insulation only) Roof = 0.16, Floor = 0.21		Wall U-value 0.15W/m ² K (internal insulation only) Roof = 0.14, Floor = 0.15		Wall U-value 0.12W/m ² K (internal insulation only) Roof = 0.12, Floor = 0.12	
Inner leaf type	Ψ-value (W/mK)	Temperature factor (fRsi)	Ψ-value (W/mK)	Temperature factor (fRsi)	Ψ-value (W/mK)	Temperature factor (fRsi)
B3	0.020	0.91	0.031	0.92	0.046	0.93
B5	0.024	0.91	0.034	0.92	0.048	0.93
B7	0.026	0.91	0.035	0.92	0.049	0.93

Notes

Perimeter insulation to have minimum thermal resistance of 5.45m²K/W. For U-values down to 0.12W/m²K for walls, please consult Quinn Technical. For walls type C, the inner leaf comprises Quinlite block.



Andrew Lundberg
Passivate
Registration Number IAB/TM/02
NSAI Approved Thermal Modeller