

Description

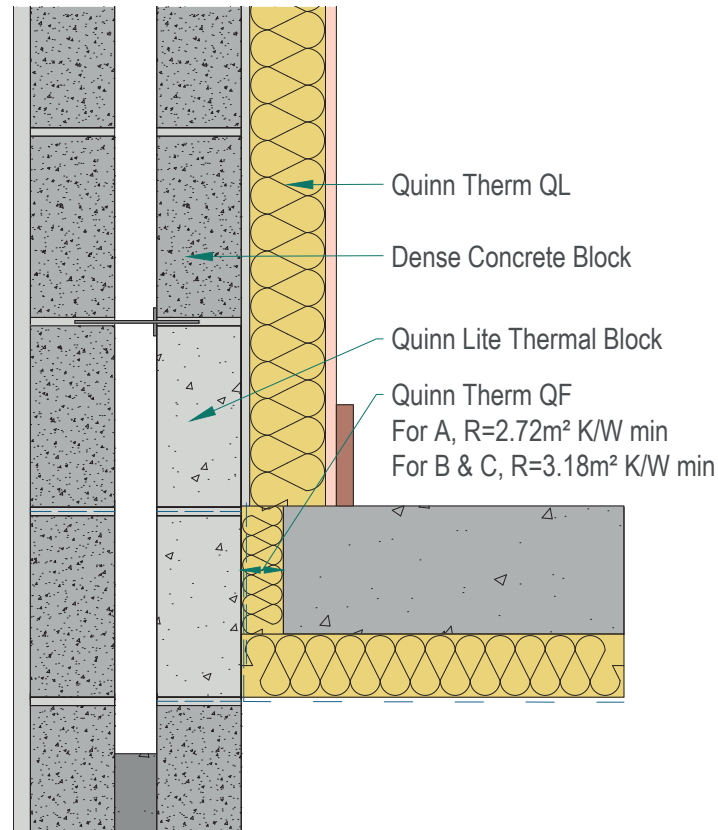
Ground Floor - Insulation below slab

Identifier

3.02

NSAI modeller no.

TM/02



	A		B		C	
	Wall U-value 0.21W/m2K (internal insulation only) Roof = 0.16, Floor = 0.21		Wall U-value 0.15W/m2K (internal insulation only) Roof = 0.14, Floor = 0.15		Wall U-value 0.12W/m2K (internal insulation only) Roof = 0.12, Floor = 0.12	
Inner leaf type	Ψ-value (W/mK)	Temperature factor (fRsi)	Ψ-value (W/mK)	Temperature factor (fRsi)	Ψ-value (W/mK)	Temperature factor (fRsi)
B3	0.073	0.88	0.065	0.87	0.070	0.91
B5	0.076	0.87	0.067	0.87	0.070	0.91
B7	0.077	0.87	0.067	0.87	0.070	0.91

Notes

For wall type A, perimeter insulation to have minimum thermal resistance of 2.72m2K/W. For walls types B & C, perimeter insulation to have minimum thermal resistance of 3.18m2KW. For U-values down to 0.12W/m2K for walls, please consult Quinn Technical. For walls types B & C, the inner leaf comprises Quinnlite block.



Andrew Lundberg
Passivate

Registration Number IAB/TM/02
NSAI Approved Thermal Modeller