

Description

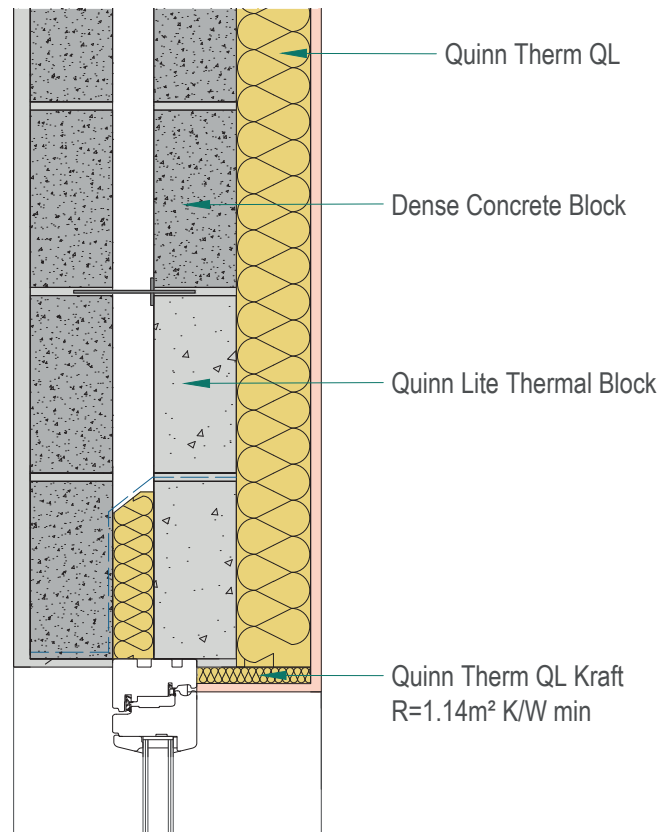
Ope - Sill

Identifier

3.21

NSAI modeller no.

TM/02



| | A | | B | | C | |
|-----------------|---|---------------------------|---|---------------------------|---|---------------------------|
| | Wall U-value 0.21W/m2K (internal insulation only) Roof = 0.16, Floor = 0.21 | | Wall U-value 0.15W/m2K (internal insulation only) Roof = 0.14, Floor = 0.15 | | Wall U-value 0.12W/m2K Roof = 0.12, Floor = 0.12 | |
| Inner leaf type | Ψ-value (W/mK) | Temperature factor (fRsi) | Ψ-value (W/mK) | Temperature factor (fRsi) | Ψ-value (W/mK) | Temperature factor (fRsi) |
| B3 | 0.018 | 0.89 | 0.029 | 0.88 | 0.039 | 0.88 |
| B5 | 0.020 | 0.88 | 0.031 | 0.88 | 0.038 | 0.88 |
| B7 | 0.021 | 0.88 | 0.031 | 0.88 | 0.038 | 0.88 |

Notes

3mm Stainless Steel Lintel is fully insulated (conductivity 0.04 W/m2K) and does not have a base plate. Insulation at lintel soffit to have a minimum R-value of 1.14 m2K/W.



Andrew Lundberg
Passivate
Registration Number IAB/TM/02
NSAI Approved Thermal Modeller