

# QUINN LITE

## Description

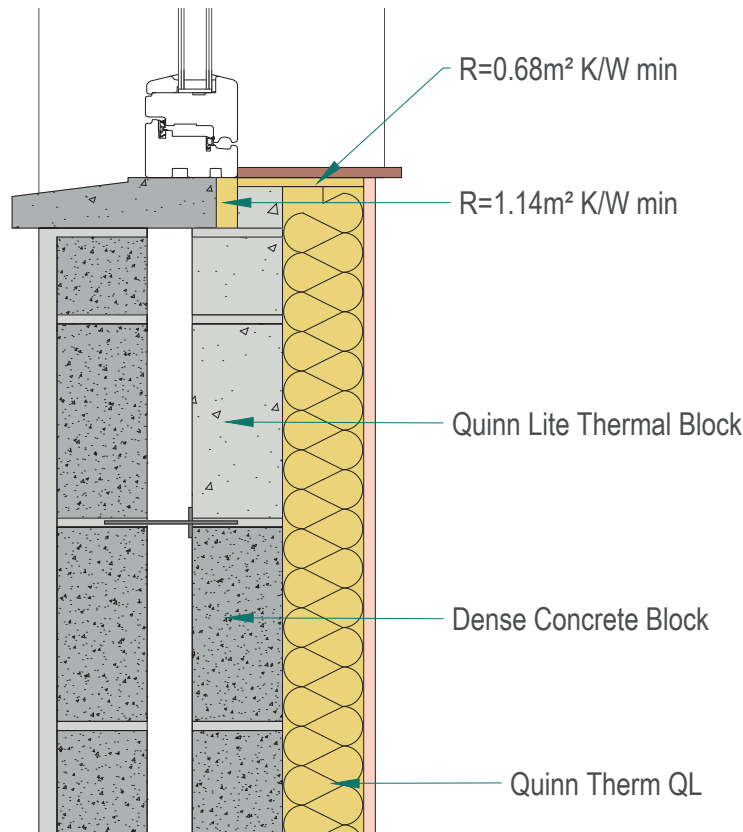
Open - Concrete Back Sill

### Identifier

3.25

### NSAI modeller no.

TM/02



	A		B		C	
	Wall U-value $0.21\text{W/m}^2\text{K}$ (internal insulation only) Roof = $0.16$ , Floor = $0.21$		Wall U-value $0.15\text{W/m}^2\text{K}$ (internal insulation only) Roof = $0.14$ , Floor = $0.15$		Wall U-value $0.12\text{W/m}^2\text{K}$ Roof = $0.12$ , Floor = $0.12$	
Inner leaf type	$\Psi$ -value (W/mK)	Temperature factor (fRsi)	$\Psi$ -value (W/mK)	Temperature factor (fRsi)	$\Psi$ -value (W/mK)	Temperature factor (fRsi)
B3	0.026	0.86	0.037	0.85	0.047	0.85
B5	0.031	0.85	0.041	0.85	0.048	0.85
B7	0.032	0.85	0.042	0.84	0.049	0.84

## Notes

Insulation under cill to have an R value of  $0.68\text{m}^2\text{K/W}$  and behind of  $1.14\text{m}^2\text{K/W}$



Andrew Lundberg  
Passivate  
Registration Number IAB/TM/02  
NSAI Approved Thermal Modeller