

Description

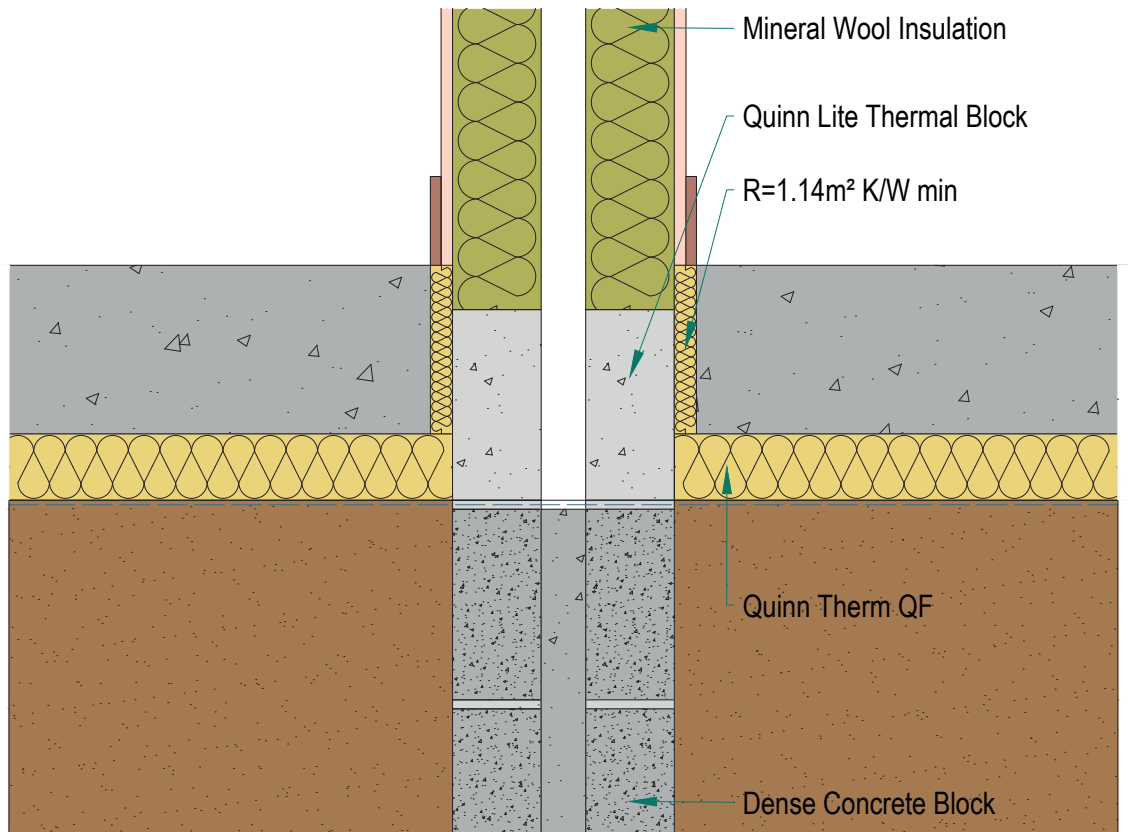
Steel Separating Wall through ground floor

Identifier

5.22.1

NSAI modeller no.

TM/02



	A		B		C	
	Wall U-value 0.21W/m2K (internal insulation only) Roof = 0.16, Floor = 0.21		Wall U-value 0.15W/m2K (internal insulation only) Roof = 0.14, Floor = 0.15		Wall U-value 0.12W/m2K (internal insulation only) Roof = 0.12, Floor = 0.12	
Inner leaf type	Ψ-value (W/mK)	Temperature factor (fRsi)	Ψ-value (W/mK)	Temperature factor (fRsi)	Ψ-value (W/mK)	Temperature factor (fRsi)
B3	0.037	0.95	0.025	0.95	0.053	0.95
B5	0.045	0.95	0.029	0.95	0.057	0.95
B7	0.045	0.95	0.030	0.95	0.059	0.95

Notes

Perimeter insulation to have minimum thermal resistance of 1.136m2K/W. Assign half of the tabulated psi value to the calculation of the y-factor each dwelling either side of the separating wall.



NSAI
Agrément

Andrew Lundberg
Passivate

Registration Number IAB/TM/02
NSAI Approved Thermal Modeller