

Description

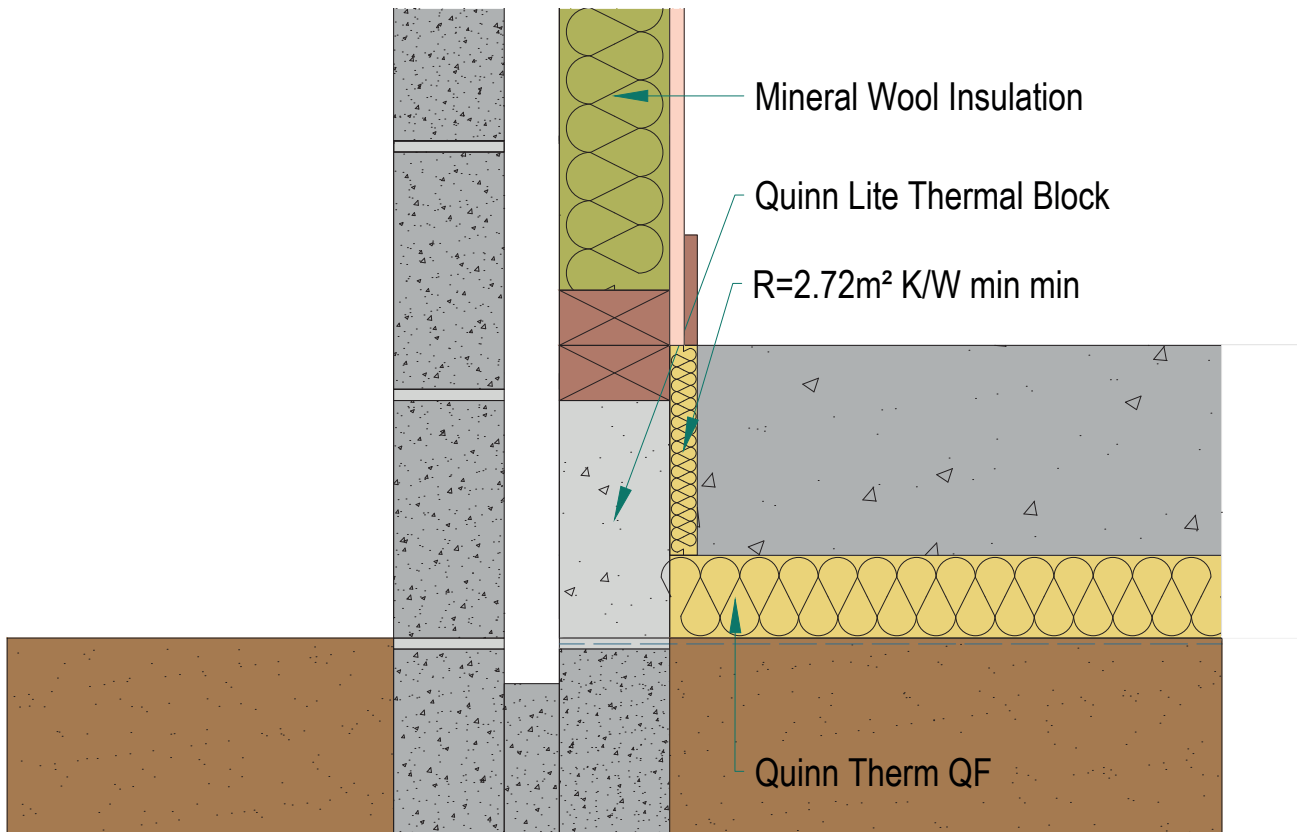
Ground Floor - Insulation below slab

Identifier

4.02

NSAI modeller no.


TM/02



	A		B		C	
	Wall U-value 0.21W/m2K (internal insulation only) Roof = 0.16, Floor = 0.21		Wall U-value 0.15W/m2K (internal insulation only) Roof = 0.14, Floor = 0.15		Wall U-value 0.12W/m2K (internal insulation only) Roof = 0.12, Floor = 0.12	
Inner leaf type	Ψ-value (W/mK)	Temperature factor (fRsi)	Ψ-value (W/mK)	Temperature factor (fRsi)	Ψ-value (W/mK)	Temperature factor (fRsi)
B3	0.084	0.86	0.067	0.89	0.056	0.90
B5	0.087	0.86	0.068	0.88	0.057	0.90
B7	0.088	0.86	0.069	0.88	0.058	0.90

Notes

Perimeter insulation to have minimum thermal resistance of 2.72m2K/W. Wall type A uses mineral wool insulation (0.04W/mK) between studs. Wall types B & C use Quinn Therm. For U-values down to 0.12W/m2K for walls, please consult Quinn Technical.



Andrew Lundberg
Passivate
Registration Number IAB/TM/02
NSAI Approved Thermal Modeller