

## Description

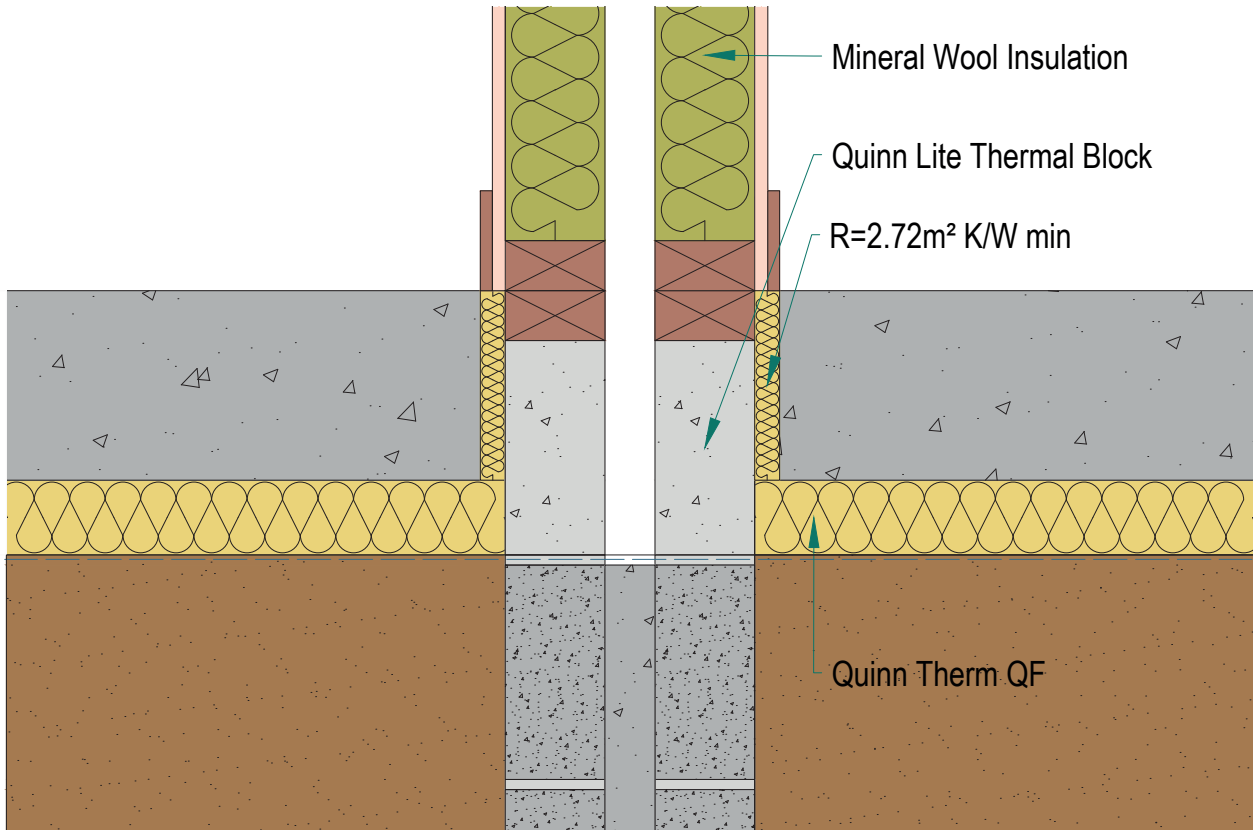
Timber Frame Separating Wall through ground floor

### Identifier

4.23.1

### NSAI modeller no.

TM/02



	A		B		C	
	Wall U-value 0.21W/m2K (internal insulation only) Roof = 0.16, Floor = 0.21		Wall U-value 0.15W/m2K (internal insulation only) Roof = 0.14, Floor = 0.15		Wall U-value 0.12W/m2K (internal insulation only) Roof = 0.12, Floor = 0.12	
Inner leaf type	Ψ-value (W/mK)	Temperature factor (fRsi)	Ψ-value (W/mK)	Temperature factor (fRsi)	Ψ-value (W/mK)	Temperature factor (fRsi)
B3	0.084	0.86	0.067	0.89	0.056	0.90
B5	0.087	0.86	0.068	0.88	0.057	0.90
B7	0.088	0.86	0.069	0.88	0.058	0.90

## Notes

Notes: Perimeter insulation to have minimum thermal resistance of 2.72m2K/W. Wall type A uses mineral wool insulation (0.04W/mK) between studs. Wall types B & C use Quinn Therm. For U-values down to 0.12W/m2K for walls, please consult Quinn Technical.

**NSAI**  
Agrément

Andrew Lundberg  
Passivate

Registration Number IAB/TM/02  
NSAI Approved Thermal Modeller